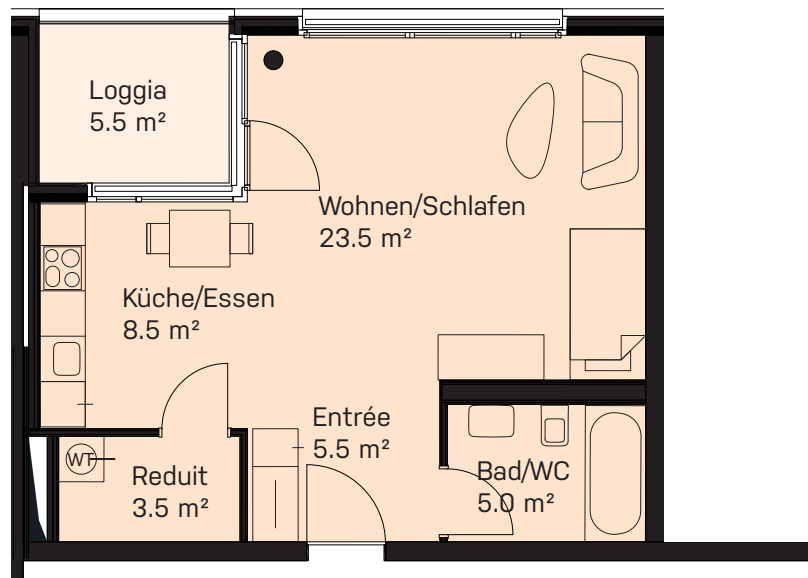
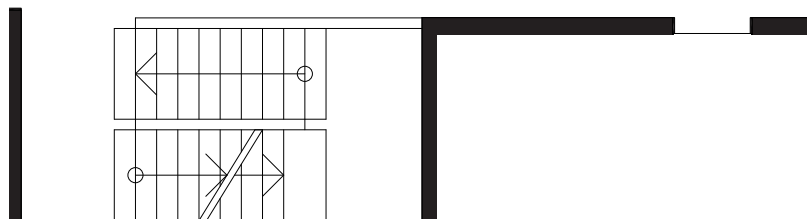


# 1½ Zimmer | 2. – 4.OG

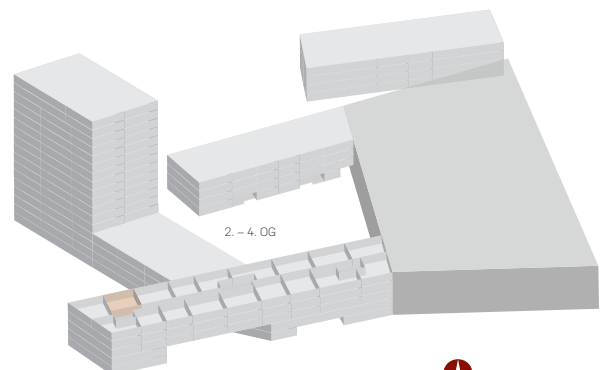
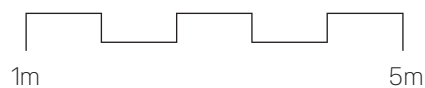
|                   |                        |                              |
|-------------------|------------------------|------------------------------|
| Netto Wohnfläche: | ca. 46 m <sup>2</sup>  | Wohnungen:                   |
| Loggia:           | ca. 5.5 m <sup>2</sup> | D.02.11, D.03.11,<br>D.04.11 |
| Gebäude:          | Haus D – Young Living  |                              |



Treppenhaus



Masstab: 1:100



Alle Quadratmeter-Angaben sind ca. Angaben.  
Änderungen bleiben vorbehalten.

Primus Property AG | Binzallee 4 | CH-8055 Zürich |  
Tel. +41 44 457 60 65 | info@pripo.ch | www.limmatspot.ch